

Activity Name	Original Duration	Planned Start	Planned Finish	2011				2012				2013				2014				2015				2016	
				Q3	Q4	Q1	Q2	Q3	Q4	Q1	Q2	Q3	Q4	Q1	Q2	Q3	Q4	Q1	Q2	Q3	Q4	Q1	Q2	Q3	Q4
<b>HY/2009/15 - CWB TUNNEL (CBTS SECTION)</b>																									
<b>SUBMISSIONS COMPLYING WITH EPs</b>																									
EM&A Manual ( rely on the Master EP's submission EP-364/2009/A Condition 2.5)																									
Baseline Monitoring Report (rely on the Master EP's submission EP-364/2009 Condition 3.3)																									
Monthly EM&A (rely on the masters EP's Submission, EP-364/2009/A Condition 3.4)																									
A dedicated website (rely on the master EP's submission, EP-364/2009/A Condition 4.2)																									
Management organization of main construction companies (FEP Condition 2.6)	1d	02-Oct-10	02-Oct-10																						
Work Schedule (FEP Condition 2.7)	1d	27-Oct-10	27-Oct-10																						
Location Plan (FEP Condition 2.8)	1d	27-Oct-10	27-Oct-10																						
Noise Management plan (FEP Condition 2.9)	1d	27-Oct-10	27-Oct-10																						
Landscape plan (FEP condition 2.10)	1d	31-Jan-11	31-Jan-11																						
<b>EAST VENTILATION ADIT</b>																									
CCT @ Portion 1, 2, 4, 6, 22	1315d	27-Sep-10	03-May-14																						
EV Adit @ Portion 4-Advance Works	526d	27-Sep-10	05-Mar-12																						
EV Adit Portion 1, 2, 6, 22	26d	22-Dec-11	16-Jan-12																						
EV Adit-based on Conforming Design	323d	15-Feb-12	02-Jan-13																						
<b>TCBR1E (TS1 Area)</b>																									
Diaphragm Wall Construction (incl. SI, & tests after completion)	107d	26-Apr-11	10-Aug-11																						
Excavation & Lateral Support, ELS	99d	16-Jul-11	22-Oct-11																						
Cut & Cover Tunnel Construction (incl. backfill)	78d	22-Oct-11	07-Jan-12																						
OHVD and Cable Trough (access from Portion 22)	76d	18-Dec-13	03-Mar-14																						
<b>TCBR2 + TCBR3 (TS2 Area)</b>																									
Diaphragm Wall Construction	118d	06-Jul-12	31-Oct-12																						
Excavation & Lateral Support, ELS	248d	06-Jul-12	10-Mar-13																						
Cut & Cover Tunnel Construction	164d	11-Mar-13	21-Aug-13																						
OHVD Cable Trough (Access from Portion 22)	150d	05-Aug-13	01-Jan-14																						
<b>TCBR1W (TS4 Area)</b>																									
Diaphragm Wall Construction	148d	28-Jun-11	22-Nov-11																						
Excavation & Lateral Support, ELS	319d	28-Jun-11	11-May-12																						
Landing Steps - Demolition/Reconstruct as footpath	40d	28-Jun-11	23-Aug-11																						

◆ Milestone  
◆ Milestone  
■ Remaining Work  
■ Critical Remaining Work  
■ Actual Work

1 of 2

**China State Construction Engineering (Hong Kong) Ltd.**  
**Contract No. HY/2009/15 - Central Wan Chai By Pass - Tunnel**  
**( CBTS Section)**

Prepared by William Caluza			
Date	Revision	Checked	Approved
14-Mar-11	Revision C	ST	KL
	File: 0001a		
	(Layout:HY/2009/15: CWB - Summary)		



**中國建築工程(香港)有限公司**  
**CHINA STATE CONSTRUCTION ENGR. (HONG KONG) LTD.**

Activity Name	Original Duration	Planned Start	Planned Finish	2011				2012				2013				2014				2015				2016		
				Q3	Q4	Q1	Q2	Q3	Q4	Q1	Q2	Q3	Q4	Q1	Q2	Q3	Q4	Q1	Q2	Q3	Q4	Q1	Q2	Q3	Q4	Q1
Rock Excavation	235d	25-Apr-12	15-Dec-12																							
ME4-Diaphragm Wall	114d	10-May-12	19-Oct-12																							
AS Logistics Area for Mined Tunneling Works	174d	01-Jun-12	07-Feb-13																							
ME4-ELS Works	212d	01-Jun-12	02-Apr-13																							
SCL Entrusted Works	291d	18-Jul-12	09-Sep-13																							
Cut & Cover Tunnel Construction (w/o TS4 +)	111d	17-Dec-12	06-Apr-13																							
ME4-RC Structure	146d	28-Jan-13	21-Aug-13																							
OHVD and Cable Trough (Access from TZ5/TPCWAE/TPCWAW)	180d	17-Jun-13	13-Dec-13																							
<b>MINED TUNNEL</b>																										
CHT Protection Works @ location A, B, C	342d	27-Sep-10	01-Feb-12																							
Tunnel works from West Portal (access from TPCWAE& TZ5)	418d	12-Mar-12	30-Oct-13																							
Tunnel Works from East Portal (Access from TS4 Area)	214d	30-Mar-12	01-Feb-13																							
Tunnel OHVD & Cable Trough	384d	02-Dec-13	22-May-15																							
<b>TPCWAE</b>																										
Drainage Diversion works along Hung Hing Road (Portion 19)	176d	15-Oct-10	24-Jun-11																							
Diaphragm Wall Construction	147d	20-May-11	13-Oct-11																							
Excavation & Lateral Support, ELS	421d	20-May-11	13-Jul-12																							
Rock Excavation	206d	12-Mar-12	03-Oct-12																							
AS Logistics Area for Mined Tunneling works	342d	12-May-12	18-Apr-13																							
Cut & Cover Tunnel Construction	130d	28-Jan-13	06-Jun-13																							
OHVD and Cable Trough (Access from TZ5/TPCWAW)	182d	18-Feb-15	18-Aug-15																							
<b>TPCWAW &amp; PORTION 11</b>																										
Diaphragm Wall Construction + Portion 11	222d	25-Oct-13	03-Jun-14																							
Excavation & Lateral Support, ELS	478d	25-Oct-13	14-Feb-15																							
Cut & Cover Tunnel Construction	143d	30-Dec-14	21-May-15																							
OHVD and Cable Trough Installation (Access from Portion 11)	235d	22-May-15	11-Jan-16																							

- ◆ Milestone
- ◆ Milestone
- Remaining Work
- Critical Remaining Work
- Actual Work

2 of 2

**China State Construction Engineering (Hong Kong) Ltd.**

**Contract No. HY/2009/15 - Central Wan Chai By Pass - Tunnel**

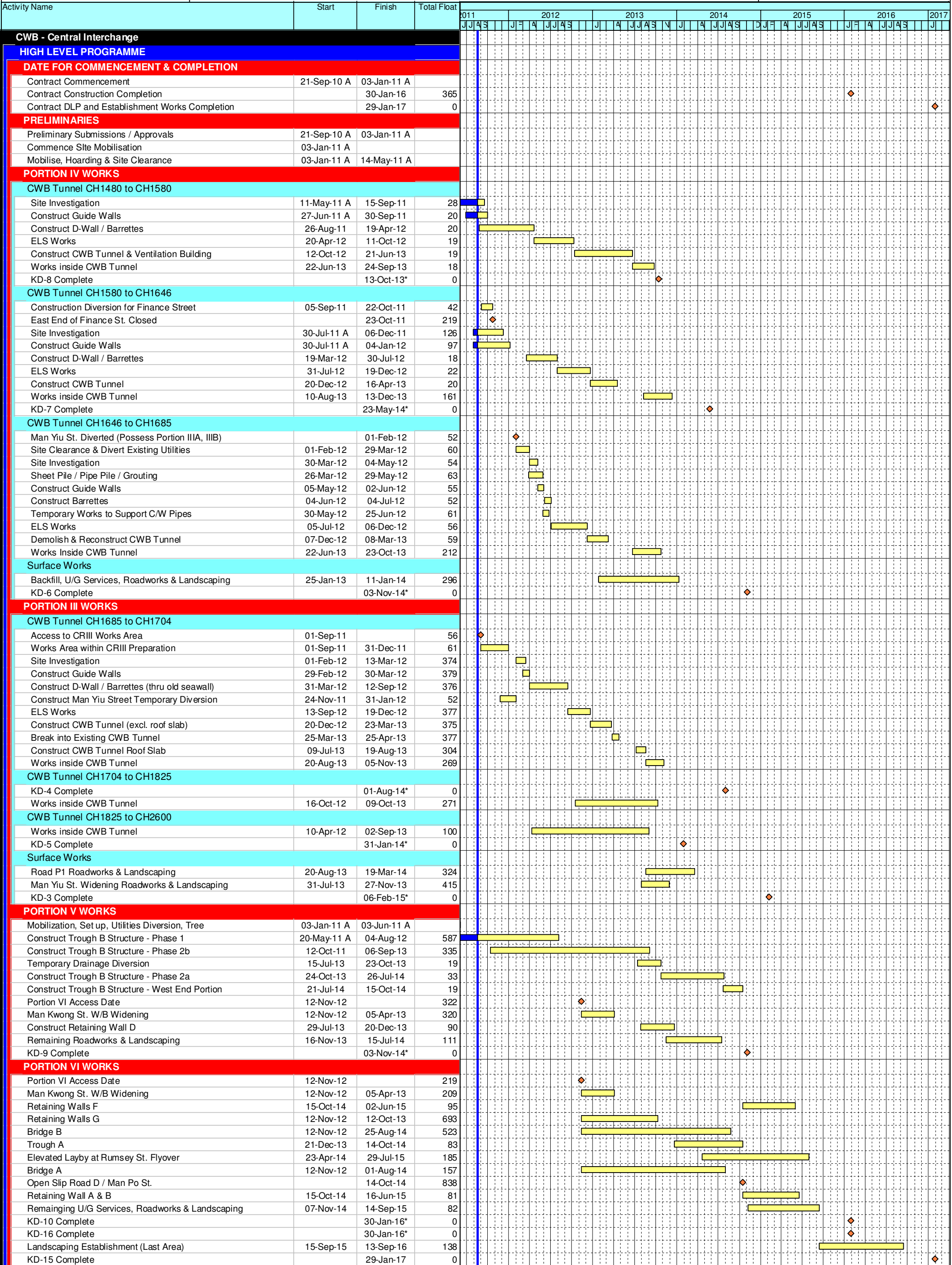
**( CBTS Section)**

Prepared by William Caluza			
Date	Revision	Checked	Approved
14-Mar-11	Revision C	ST	KL
	File: 0001a		
	(Layout:HY/2009/15: CWB - Summary)		





Activity ID	Activity Name	Original Duration	Start	Finish	Total Float	2010												2011												2012												2013
						Mar	Apr	May	Jun	Jul	Aug	Sep	Oct	Nov	Dec	Jan	Feb	Mar	Apr	May	Jun	Jul	Aug	Sep	Oct	Nov	Dec	Jan	Feb	Mar	Apr	May	Jun	Jul	Aug	Sep	Oct	Nov	Dec	Jan		
50040	Removal completed sheet piling at stage 1 Zone G	5d	06-08-11 A	24-08-11 A																																						
50050	Prepare and review ELS design and method statement for revised setting out at stage 1 (L-sharp)	16d	30-07-11 A	23-08-11 A																																						
50060	Submission of method statement and ICE certificate for sheet piling works at stage 1 (L-sharp)	14d	23-08-11 A	06-09-11	6d																																					
50070	Reinstallation sheet piling at stage 1 Zone F and Zone G	40d	02-08-11 A	14-09-11	0d																																					
50080	Pre-drilling of 560mm for sheet piling installation at stage 1 Zone F	12d	26-08-11	08-09-11	4d																																					
50090	Request consent by the engineer for excavation at stage 1 (L-sharp)	5d	15-09-11	20-09-11	0d																																					
<b>Remaining Pile Piling Works at Zone S</b>																																										
39300	Perpare of method statement and ICE certificate for pipe piling works at Zone S (new design)	10d	17-08-11 A	29-08-11	71d																																					
39305	Mobilization plant and platform	7d	30-08-11	06-09-11	71d																																					
39310	Request consent by the engineer for pipe pile works at Zone S	7d	30-08-11	06-09-11	71d																																					
39320	Drilling of 219mm for pipe pile wall at Zone S (21 nos)	21d	07-09-11	03-10-11	71d																																					
39330	Drilling of 100mm for grouting works at Zone S (14 nos)	5d	04-10-11	10-10-11	71d																																					
39340	Grouting of 219mm at Zone S (21 nos)	15d	21-09-11	10-10-11	74d																																					
39350	Grouting of 100mm at Zone S (14 nos)	3d	11-10-11	13-10-11	71d																																					
39370	Completion of works for pile pipe wall at Zone S	0d		13-10-11	71d																																					
<b>Sheet Piling Installation at Stage 2</b>																																										
55000	Prepare and review ELS design and method statement at stage 2	21d	24-05-11 A	28-06-11 A																																						
55010	Submission of method statement and ICE certificate at stage 2	30d	28-06-11 A	30-08-11	43d																																					
55020	Submission ICE check certificate for structural condition of temporary works	10d	12-08-11 A	27-08-11	43d																																					
55030	Request consent by the engineer for pump water and removal shoring at (SP15 - SP19)	5d	29-08-11	02-09-11	43d																																					
55040	Pumping water to around +0.5mpd and removal shoring at (SP15 - SP19)	10d	03-09-11	15-09-11	43d																																					
55050	Reinstallation sheet piling to -16mpd (SP15 - SP19)	50d	16-09-11	15-11-11	43d																																					
<b>Pre-drilling of 560mm for sheet piling installation near TC19</b>																																										
55500	Perpare of method statement and ICE certificate for pre-drilling works near TC19 at (SP24 - SP27)	14d	05-11-11	21-11-11	0d																																					
55510	Request consent by the engineer for pre-drilling works	7d	22-11-11	29-11-11	0d																																					
55520	Mobilization plant and platform	3d	30-11-11	02-12-11	0d																																					
55530	Pre-drilling of 560mm for sheet piling installation near TC19 at (SP24 - SP27)	18d	03-12-11	23-12-11	0d																																					
55540	Sheet piling installation near TC19 at (SP24 - SP27)	10d	24-12-11	07-01-12	0d																																					
55550	Request consent by the engineer for excavation at stage 2	5d	21-01-12	26-01-12	0d																																					
<b>Dewatering/Ground Water Control Measures</b>																																										
45000	Prepare proposal for dewatering control	21d	18-04-11 A	18-05-11 A																																						
45010	Submission of method statement and ICE certificate for dewatering control at stage 1 (L-sharp)	7d	20-05-11 A	07-06-11 A																																						
45020	Installation of dewatering system at stage 1 (L-sharp)	12d	27-06-11 A	16-07-11 A																																						
45030	Pumping Test at stage 1 (L-sharp)	4d	19-07-11 A	23-07-11 A																																						
45040	Prepare and submission for pumping test report at stage 1 (L-sharp)	14d	25-07-11 A	23-08-11 A																																						
45050	Submission of method statement and ICE certificate for dewatering control at stage 2	7d	13-06-11 A	28-06-11 A																																						
45060	Installation of dewatering system at stage 2	16d	08-10-11	26-10-11	60d																																					
45080	Pumping Test at stage 2	4d	09-01-12	12-01-12	0d																																					
45090	Prepare and submission for pumping test report at stage 2	7d	13-01-12	20-01-12	0d																																					
45100	Completion of works for dewatering control	0d		20-01-12	0d																																					
<b>Excavation and Shoring Installation at Basement Carpark</b>																																										
<b>ELS - L-Sharp - For Bay B1 to Bay B3</b>																																										
60000	Excavation to +0.7mpd at Bay 1	2d	21-09-11	22-09-11	0d																																					
60010	Installation 1st layer waler and strut at Bay 1	5d	23-09-11	28-09-11	0d																																					
60020	Excavation to +0.7mpd at Bay 2	3d	23-09-11	26-09-11	0d																																					
60030	Installation 1st layer waler and strut at Bay 2	5d	27-09-11	03-10-11	0d																																					
60040	Excavation to -2.2mpd at Bay 1 & protect grouted soil underneath Pilec	9d	29-09-11	11-10-11	0d																																					
60060	Installation 2nd layer waler and strut at Bay 1	7d	12-10-11	19-10-11	0d																																					
60070	Excavation to -4.1mpd at Bay 1 & protect grouted soil underneath Pilec	9d	20-10-11	29-10-11	0d																																					
60080	Excavation to -2.2mpd at Bay 2 & protect grouted soil underneath Pilec	9d	04-10-11	14-10-11	0d																																					



Activity ID	Activity Name	Rem Dur	Start	Finish	2011																
					August					September				October				November			
					25	01	08	15	22	29	05	12	19	26	03	10	17	24	31	07	14
<b>3MRP - Aug 2011 to Nov 2011</b>																					
<b>01 - CONTRACT DATES</b>																					
<b>01.2 - Possession of Site</b>																					
0120-1100	Possession to Portion VIIA	0	04-Aug-11 A		◆ Possession to Portion VIIA																
0120-1200	Possession to Portion VIIB	0	04-Aug-11 A		◆ Possession to Portion VIIB																
0120-1300	Possession to Portion VIIC	0	04-Aug-11 A		◆ Possession to Portion VIIC																
0120-1400	Possession to Portion VIID	0	04-Aug-11 A		◆ Possession to Portion VIID																
0120-1500	Possession to Portion XI	0	05-Oct-11*							◆ Possession to Portion XI											
0120-1600	Possession to Portion IA	0	10-Nov-11*															◆ Possession			
0120-1700	Possession to Portion IB	0	10-Nov-11*															◆ Possession			
0120-1800	Possession to Portion IC	0	10-Nov-11*															◆ Possession			
0120-1900	Possession to Portion ID	0	10-Nov-11*															◆ Possession			
0120-2000	Possession to Portion X	0	10-Nov-11*															◆ Possession			
<b>01.5 - Period of Site Possession for each Portion</b>																					
0150-1000	Site possession Period Portion VI	2131	20-Jan-11 A	19-Jun-17	[Green bar]																
0150-1200	Site Possession Period Portion VIIB	914	04-Aug-11 A	18-Feb-14	[Green bar]																
0150-1300	Site Possession Period Portion VIIC	1293	04-Aug-11 A	04-Mar-15	[Green bar]																
0150-1400	Site Possession Period Portion VIID	914	04-Aug-11 A	18-Feb-14	[Green bar]																
0150-1500	Site Possession Period Portion XI	681	05-Oct-11	15-Aug-13	[Green bar]																
0150-1600	Site Possession Period Portion IA	2049	10-Nov-11	19-Jun-17	[Green bar]																
0150-1700	Site Possession Period Portion IB	832	10-Nov-11	18-Feb-14	[Green bar]																
0150-1800	Site Possession Period Portion IC	1211	10-Nov-11	04-Mar-15	[Green bar]																
0150-1900	Site Possession Period Portion ID	832	10-Nov-11	18-Feb-14	[Green bar]																
0150-2000	Site Possession Period Portion X	2049	10-Nov-11	19-Jun-17	[Green bar]																
<b>02 - PRE-CONSTRUCTION WORKS</b>																					
<b>02.1 - Permit &amp; Licence Application</b>																					
0210-1300	Apply for XP from HyD	12	21-Mar-11 A	31-Aug-11	[Blue bar]					Apply for XP from HyD											
0210-1400	XP issued by HyD	0		31-Aug-11						◆ XP issued by HyD											
0210-1500	Dumping Permit from CEDD	42	10-Mar-11 A	30-Sep-11	[Blue bar]					Dumping Permit from CEDD											
<b>02.2 - Contractor's Submission</b>																					
0220-1150	Revise Detailed Works Programme	0	08-Jul-11 A	29-Jul-11 A	[Blue bar]					Revise Detailed Works Programme											
0220-1160	Detailed Works Programme - Approval from ER	1	30-Jul-11 A	20-Aug-11*	[Blue bar]					Detailed Works Programme - Approval from ER											
0220-1170	Temp. Drainage Management Plan Preparation	0	21-Jul-11 A	03-Aug-11 A	[Blue bar]					Temp. Drainage Management Plan Preparation											
0220-1180	Temp. Drainage Management Plan - Review & Comment by ER	0	04-Aug-11 A	09-Aug-11 A	[Blue bar]					Temp. Drainage Management Plan - Review & Comment by ER											
0220-1190	Revise Temp. Drainage Management Plan	7	10-Aug-11 A	26-Aug-11	[Blue bar]					Revise Temp. Drainage Management Plan											
0220-1200	Temp. Drainage Management Plan - Approval from ER	28	27-Aug-11	23-Sep-11	[Blue bar]					Temp. Drainage Management Plan - Approval from ER											
0220-1240	Concrete Ready Mix/Design Mix - ER Approval	0	16-Jul-11 A	03-Aug-11 A	[Blue bar]					Concrete Ready Mix/Design Mix - ER Approval											
0220-1250	Concrete Ready Mix/Design Mix - Concrete Plant Trials & Approval	30	20-Aug-11	18-Sep-11	[Blue bar]					Concrete Ready Mix/Design Mix - Concrete Plant Trials & Approval											
0220-1260	Drainage Pipes & Materials - Submission	28	20-Aug-11	16-Sep-11	[Blue bar]					Drainage Pipes & Materials - Submission											
0220-1270	Drainage Pipes & Materials - ER Review/Comment	28	17-Sep-11	14-Oct-11	[Blue bar]					Drainage Pipes & Materials - ER Review/Comment											
0220-1280	Drainage Pipes & Materials - Resubmission	14	15-Oct-11	28-Oct-11	[Blue bar]					Drainage Pipes & Materials - Resubmission											
0220-1290	Drainage Pipes & Materials - ER Approval	28	29-Oct-11	25-Nov-11	[Blue bar]					Drainage Pipes & Materials - ER Approval											
0220-1310	D-Wall Construction Materials - Submission	0	01-Aug-11 A	18-Aug-11 A	[Blue bar]					D-Wall Construction Materials - Submission											
0220-1320	D-Wall Construction Materials - ER Review/Comment	18	19-Aug-11 A	06-Sep-11	[Blue bar]					D-Wall Construction Materials - ER Review/Comment											
0220-1330	D-Wall Construction Materials - Resubmission	7	07-Sep-11	13-Sep-11	[Blue bar]					D-Wall Construction Materials - Resubmission											
0220-1340	D-Wall Construction Materials - ER Approval	14	14-Sep-11	27-Sep-11	[Blue bar]					D-Wall Construction Materials - ER Approval											
0220-1350	D-Wall Construction Materials - Procurement & Delivery	12	28-Sep-11	09-Oct-11	[Blue bar]					D-Wall Construction Materials - Procurement & Delivery											

- Remaining Level of Effort
- Actual Level of Effort
- Actual Work
- Remaining Work
- Critical Remaining Work
- ◆ Milestone

**Contract HY/2009/19**

**Three Month Rolling Programme (21 Aug - 20 Nov 2011)**

3MRP

3MRP - Aug 2011 to Nov 2011

Page 1 of 4

Activity ID	Activity Name	Rem Dur	Start	Finish	2011																		
					August					September				October				November					
					25	01	08	15	22	29	05	12	19	26	03	10	17	24	31	07	14		
0220-1430	Bored Piles/H-piles Materials - Resubmission	0	17-Jun-11 A	25-Jul-11 A	Bored Piles/H-piles Materials - Resubmission																		
0220-1440	Bored Piles/H-piles Materials - ER Approval	14	16-Jun-11 A	02-Sep-11	Bored Piles/H-piles Materials - ER Approval																		
0220-1450	Bored Piles/H-piles Materials - Procurement & Delivery	42	03-Sep-11	14-Oct-11	Bored Piles/H-piles Materials - Procurement & Delivery																		
0220-1460	Bridge Bearing - Submission	60	17-Sep-11	15-Nov-11	Bridge Bearing - Submission																		
0220-1470	Bridge Bearing - ER Review/Comment	28	16-Nov-11	13-Dec-11	Bridge Bearing - ER Review/Comment																		
<b>02.3 - Method Statement / Shop Drawings</b>																							
0230-1120	MS Marine Piling - Resubmission	14	20-Jul-11 A	02-Sep-11	MS Marine Piling - Resubmission																		
0230-1130	MS Marine Piling - ER Approval	28	03-Sep-11	30-Sep-11	MS Marine Piling - ER Approval																		
0230-1160	MS Dolphin Demolition - Resubmission	0	04-Jul-11 A	23-Jul-11 A	MS Dolphin Demolition - Resubmission																		
0230-1170	MS Dolphin Demolition - ER Approval	0	25-Jul-11 A	12-Aug-11 A	MS Dolphin Demolition - ER Approval																		
0230-1190	MS Ground Piling - ER Review & Comment	0	01-Jul-11 A	27-Jul-11 A	MS Ground Piling - ER Review & Comment																		
0230-1200	MS Ground Piling - Resubmission	14	28-Jul-11 A	02-Sep-11	MS Ground Piling - Resubmission																		
0230-1210	MS Ground Piling - ER Approval	14	06-Aug-11 A	16-Sep-11	MS Ground Piling - ER Approval																		
0230-1220	MS Diaphragm Wall - Submission	0	13-Jul-11 A	16-Aug-11 A	MS Diaphragm Wall - Submission																		
0230-1230	MS Diaphragm Wall - ER Review & Comment	18	17-Aug-11 A	06-Sep-11	MS Diaphragm Wall - ER Review & Comment																		
0230-1240	MS Diaphragm Wall - Resubmission	12	07-Sep-11	18-Sep-11	MS Diaphragm Wall - Resubmission																		
0230-1250	MS Diaphragm Wall - ER Approval	18	19-Sep-11	06-Oct-11	MS Diaphragm Wall - ER Approval																		
0230-1620	MS Box Culvert T1 - Submission	6	09-Aug-11 A	25-Aug-11	MS Box Culvert T1 - Submission																		
0230-1630	MS Box Culvert T1 - ER Review & Comment	14	26-Aug-11	08-Sep-11	MS Box Culvert T1 - ER Review & Comment																		
0230-1640	MS Box Culvert T1 - Resubmission	7	09-Sep-11	15-Sep-11	MS Box Culvert T1 - Resubmission																		
0230-1650	MS Box Culvert T1 - ER Approval	12	16-Sep-11	27-Sep-11	MS Box Culvert T1 - ER Approval																		
<b>02.4 - Contractor's Design and Build Items</b>																							
0240-1090	Int. Noise Enclosure Design - Public Consultation	160	29-Jul-11 A	26-Jan-12	Int. Noise Enclosure Design - Public Consultation																		
0240-1120	Noise Barrier Design - Public Consultation	160	29-Jul-11 A	26-Jan-12	Noise Barrier Design - Public Consultation																		
0240-1340	Marine Bored Piling Platform Design - Prep & Submit	0	13-Jul-11 A	08-Aug-11 A	Marine Bored Piling Platform Design - Prep & Submit																		
0240-1350	Marine Bored Piling Platform Design - ER review & comment	3	09-Aug-11 A	22-Aug-11	Marine Bored Piling Platform Design - ER review & comment																		
0240-1360	Marine Bored Piling Platform Design - Resubmission	9	23-Aug-11	31-Aug-11	Marine Bored Piling Platform Design - Resubmission																		
0240-1370	Marine Bored Piling Platform Design - ER Approval	12	01-Sep-11	12-Sep-11	Marine Bored Piling Platform Design - ER Approval																		
<b>03 - PRELIMINARY WORKS</b>																							
<b>03.1 - Site Establishment</b>																							
0310-1290	Fabrication of Special Hoarding	75	04-Oct-11	30-Dec-11	Fabrication of Special Hoarding																		
0310-1700	Temporary Cul-de-sac at Watson Road	10	08-Aug-11 A	31-Aug-11	Temporary Cul-de-sac at Watson Road																		
<b>03.2 - Geotechnical Instrumentation &amp; Monitoring Works</b>																							
0320-1000	Geotechnical Instrumentation Portion VIIB & VIID	13	04-Aug-11 A	03-Sep-11	Geotechnical Instrumentation Portion VIIB & VIID																		
0320-1050	Geotechnical Instrumentation Portion IB, ID	30	10-Nov-11	14-Dec-11	Geotechnical Instrumentation Portion IB, ID																		
<b>03.3 - Interface Works</b>																							
0330-1000	Develop Interface Management Plan with adjacent Contractors/Others	37	06-Apr-11 A	04-Oct-11	Develop Interface Management Plan with adjacent Contractors/Others																		
0330-1100	Works at FEHD Permanent Depot (Stage 1)	36	10-Nov-11	21-Dec-11	Works at FEHD Permanent Depot (Stage 1)																		
0330-1110	Submit to FEHD/ER Relocation Sequence & Programme	6	10-Nov-11	16-Nov-11	Submit to FEHD/ER Relocation Sequence & Programme																		
<b>04 - SECTION 1 OF THE WORKS (Subject to Excision)</b>																							
<b>04.1 - Drainage &amp; Sewerage</b>																							
0410-0980	Ground investigation + CAR & RAP approval	86	19-Jul-11 A	01-Dec-11	Ground investigation + CAR & RAP approval																		
<b>05 - SECTION 2 &amp; 2A OF THE WORKS</b>																							
<b>05.2 - Cut &amp; Cover Tunnel Ch 4932-5149</b>																							
<b>05.2.1 - D-Wall Construction</b>																							
0521-1650	Site Survey & Setting Out (Portion VIIB and VIIC)	0	04-Aug-11 A	06-Aug-11 A	Site Survey & Setting Out (Portion VIIB and VIIC)																		
0521-1660	Site Establishment (Portion VIIB and VIIC)	14	04-Aug-11 A	05-Sep-11	Site Establishment (Portion VIIB and VIIC)																		
0521-1665	Construction of Temporary Barging Point/Jetty at Portion VIIA	34	08-Aug-11 A	29-Sep-11	Construction of Temporary Barging Point/Jetty at Portion VIIA																		

- Remaining Level of Effort
- Actual Level of Effort
- Actual Work
- Remaining Work
- Critical Remaining Work
- ◆ Milestone

**Contract HY/2009/19**

**Three Month Rolling Programme (21 Aug - 20 Nov 2011)**

3MRP

3MRP - Aug 2011 to Nov 2011

Page 2 of 4

Activity ID	Activity Name	Rem Dur	Start	Finish	2011																	
					August					September				October				November				
					25	01	08	15	22	29	05	12	19	26	03	10	17	24	31	07	14	
0521-1670	D-wall Plant Set-up	43	08-Aug-11 A	12-Oct-11																		
0521-1690	D-wall N95-N106 Grouting for Existing Seawall Rubble Mound	36	05-Sep-11*	19-Oct-11																		
0521-1700	D-wall N95-N106 Guide Wall	30	27-Sep-11	02-Nov-11																		
0521-1710	D-wall N95-N106 Construction (12 nos@6.5d - Set 1)	82	13-Oct-11	16-Jan-12																		
0521-1720	D-wall N83-N94 Pre-drilling (12 nos@3d - 3 rigs)	20	26-Aug-11	19-Sep-11																		
0521-1730	D-wall N83-N94 Grouting for Existing Seawall Rubble Mound	36	12-Sep-11	26-Oct-11																		
0521-1740	D-wall N83-N94 Guide Wall	30	06-Oct-11	09-Nov-11																		
0521-1750	D-wall N83-N94 Construction (12 nos@7d - Set 3)	84	20-Oct-11	28-Jan-12																		
0521-1770	D-wall N71-N82 Grouting for Existing Seawall Rubble Mound	36	05-Sep-11*	20-Oct-11																		
0521-1780	D-wall N74-N82 Guide Wall	30	27-Sep-11	03-Nov-11																		
0521-1790	D-wall N74-N82 Construction (9 nos@6.5d - Set 4)	60	13-Oct-11	22-Dec-11																		
0521-1800	D-wall N59-N70 Pre-drilling (12 nos@3d - 3 rigs)	12	10-Sep-11	24-Sep-11																		
0521-1810	D-wall N59-N70 Grouting for Existing Seawall Rubble Mound	36	19-Sep-11*	01-Nov-11																		
0521-1820	D-wall N59-N70 Guide Wall	30	12-Oct-11	15-Nov-11																		
0521-1830	D-wall N59-N70 Construction (12 nos@6.5d - Set 2)	78	26-Oct-11	27-Jan-12																		
0521-1840	D-wall N52-N58 Pre-drilling (7 nos@3d - 1 rig)	18	10-Sep-11	03-Oct-11																		
0521-1850	D-wall N52-N58 Grouting for Existing Seawall Rubble Mound	24	04-Oct-11	01-Nov-11																		
0521-1860	D-wall N52-N58 Guide Wall	18	19-Oct-11	08-Nov-11																		
0521-1870	D-wall N52-N58 Construction (7 nos@6.5d - Set 5)	48	02-Nov-11	27-Dec-11																		
0521-1910	D-wall Temp End-wall Pre-drilling (7 nos@3d - 1 rig)	21	04-Oct-11	28-Oct-11																		
0521-1920	D-wall Temp Grouting for Existing Seawall Rubble Mound	24	05-Nov-11	02-Dec-11																		
0521-1950	Site Survey & Setting Out (Portion IA and IC)	3	10-Nov-11	12-Nov-11																		
0521-1960	Site Establishment (Portion IA and IC)	24	10-Nov-11	07-Dec-11																		
0521-1970	D-wall S102-S113 Pre-drilling (12 nos@3d - 2 rigs)	18	10-Nov-11	30-Nov-11																		
0521-2030	D-wall S78-S89 Pre-drilling (12 nos@3d - 2 rigs)	18	10-Nov-11	30-Nov-11																		
0521-2150	D-wall N52-N106 G.I. Preliminary Report / Founding Level	37	26-Sep-11	09-Nov-11																		
<b>05.2.2 - Barrette Construction</b>																						
0522-2180	Barrette BC53-BC56 Pre-drilling (4 nos@3d - 2 rigs)	6	10-Nov-11	16-Nov-11																		
0522-2190	Barrette BC54-BC56 Grouting for Existing Seawall Rubble Mound	18	17-Nov-11	07-Dec-11																		
0522-2220	Barrette BC57-BC68 Pre-drilling (12 nos@3d - 2 rigs)	18	17-Nov-11	07-Dec-11																		
<b>05.3 - Box Culvert T1</b>																						
0530-2935	Watson Road TTM Satge 1 - TMLG Approval/Endorsement	0	25-May-11 A	04-Aug-11 A																		
0530-2940	Watson Road TTM Stage 1	12	20-Aug-11	02-Sep-11																		
0530-2960	Utility Coordination and Liason	0	16-Jun-11 A	04-Aug-11 A																		
0530-2970	Utility Detection & Protection	18	01-Sep-11	22-Sep-11																		
0530-2980	Bay 4-5 Site Clearance/Formation	6	16-Sep-11	22-Sep-11																		
0530-2990	Bay 4-5 Trench excavation	18	28-Sep-11	20-Oct-11																		
0530-3000	Bay 4-5 Box Culvert Construction	48	21-Oct-11	15-Dec-11																		
0530-3015	Watson Road TTM Satge 2 - TMLG Approval/Endorsement	47	05-Aug-11 A	17-Oct-11																		
<b>10 - SECTION X OF THE WORKS</b>																						
<b>10.1 - E/B Bridges (Bridge D, E and F)</b>																						
<b>10.1.1 - Marine Pier Construction</b>																						
<b>Pier F03 to F15</b>																						
1011-1150	Erect pre-drilling platform pier F7	0	28-Jul-11 A	01-Aug-11 A																		
1011-1160	Erect pre-drilling platform pier F8	0	08-Aug-11 A	13-Aug-11 A																		
1011-1190	Predrilling pier F10	0	04-Jul-11 A	30-Jul-11 A																		
1011-1220	Predrilling pier F14	0	07-Jul-11 A	30-Jul-11 A																		
1011-1240	Predrilling pier F4	0	06-Jul-11 A	30-Jul-11 A																		

- Remaining Level of Effort
- Actual Level of Effort
- Actual Work
- Remaining Work
- Critical Remaining Work
- ◆ Milestone

**Contract HY/2009/19**

**Three Month Rolling Programme (21 Aug - 20 Nov 2011)**

3MRP

3MRP - Aug 2011 to Nov 2011

Page 3 of 4



Activity ID	Activity Name	Rem Dur	Start	Finish	2011																
					August					September					October				November		
					25	01	08	15	22	29	05	12	19	26	03	10	17	24	31	07	14
1011-1250	Predrilling pier F5	0	23-Jul-11 A	13-Aug-11 A	Predrilling pier F5																
1011-1270	Predrilling pier F7	3	30-Jul-11 A	23-Aug-11	Predrilling pier F7																
1011-1280	Predrilling pier F8	20	27-Aug-11	20-Sep-11	Predrilling pier F8																
1011-1285	Portion VI Marine Piles G.I. Final Report / Founding Level	41	12-Aug-11 A	10-Oct-11	Portion VI Marine Piles G.I. Final Report / Founding Le																
1011-1310	Dismantle Pre-drilling Platform pier F10	0	01-Aug-11 A	03-Aug-11 A	Dismantle Pre-drilling Platform pier F10																
1011-1340	Dismantle Pre-drilling Platform pier F14	0	01-Aug-11 A	03-Aug-11 A	Dismantle Pre-drilling Platform pier F14																
1011-1360	Dismantle Pre-drilling Platform pier F4	0	30-Jul-11 A	02-Aug-11 A	Dismantle Pre-drilling Platform pier F4																
1011-1370	Dismantle Pre-drilling Platform pier F5	0	13-Aug-11 A	16-Aug-11 A	Dismantle Pre-drilling Platform pier F5																
1011-1390	Dismantle Pre-drilling Platform pier F7	3	24-Aug-11	26-Aug-11	Dismantle Pre-drilling Platform pier F7																
1011-1400	Dismantle Pre-drilling Platform pier F8	3	21-Sep-11	23-Sep-11	Dismantle Pre-drilling Platform pier F8																
1011-1402	Extract Existing Dolphin Front Pile pier F12	6	27-Jul-11 A	10-Oct-11	Extract Existing Dolphin Front Pile pier F12																
1011-1405	Remove Existing Dolphin pier F12	6	14-Oct-11	20-Oct-11	Remove Existing Dolphin pier F12																
1011-1410	Extract Existing Dolphin Front Pile pier F11	6	06-Aug-11 A	13-Oct-11	Extract Existing Dolphin Front Pile pier F11																
1011-1415	Remove Existing Dolphin pier F11	6	21-Oct-11	27-Oct-11	Remove Existing Dolphin pier F11																
1011-1420	Extract Existing Dolphin Front Pile pier F9	9	28-Oct-11	07-Nov-11	Extract Existing																
1011-1425	Remove Existing Dolphin pier F9	9	08-Nov-11	17-Nov-11	Remove Existing Dolphin pier F9																
1011-1430	Extract Existing Dolphin Front Pile pier F10	9	18-Nov-11	28-Nov-11	Extract Existing Dolphin Front Pile pier F10																
1011-1470	Remove Existing Dolphin pier F3	0	12-Aug-11 A	17-Aug-11 A	Remove Existing Dolphin pier F3																
1011-1480	Remove Existing Dolphin pier F4	0	13-Aug-11 A	18-Aug-11 A	Remove Existing Dolphin pier F4																
1011-1490	Remove Existing Dolphin pier F5	9	05-Sep-11*	15-Sep-11	Remove Existing Dolphin pier F5																
1011-1500	Remove Existing Dolphin pier F6	0	15-Aug-11 A	19-Aug-11 A	Remove Existing Dolphin pier F6																
1011-1510	Remove Existing Dolphin pier F7	6	16-Sep-11	22-Sep-11	Remove Existing Dolphin pier F7																
1011-1520	Remove Existing Dolphin pier F8	6	24-Sep-11	30-Sep-11	Remove Existing Dolphin pier F8																
1011-1530	Erect marine piling platform pier F3	42	25-Aug-11	15-Oct-11	Erect marine piling platform pier F3																
1011-1540	Erect marine piling platform pier F4	42	25-Aug-11	15-Oct-11	Erect marine piling platform pier F4																
1011-1550	Erect marine piling platform pier F5	36	17-Oct-11	26-Nov-11	Erect marine piling platform pier F5																
1011-1560	Erect marine piling platform pier F6	36	17-Oct-11	26-Nov-11	Erect marine piling platform pier F6																
1011-1750	Pier F3 Dolphin Pile (team 1)	36	17-Oct-11	26-Nov-11	Pier F3 Dolphin Pile (team 1)																
1011-1850	Pier F4 Dolphin Pile (team 2)	36	17-Oct-11	26-Nov-11	Pier F4 Dolphin Pile (team 2)																
<b>10.1.2 - Land Pier Construction</b>																					
<b>Pier D05 to D07</b>																					
1012-1250	Site Survey & Setting Out at VIIB (possession VIIB on 03Aug11)	0	04-Aug-11 A	17-Aug-11 A	Site Survey & Setting Out at VIIB (possession VIIB on 03Aug11)																
1012-1260	Pre-drilling for 18 nos Piling at VIIB ( 2set)	30	08-Aug-11 A	24-Sep-11	Pre-drilling for 18 nos Piling at VIIB ( 2set)																
1012-1265	Portion VIIB Land Pile G.I. Final Report / Founding Level	30	26-Sep-11	01-Nov-11	Portion VIIB Land Pile																
1012-1270	Pier D07 Bored Piles (6 piles)	108	02-Nov-11	09-Mar-12	Pier D07 Bored Piles (6 piles)																
1012-1280	Pier D06 Bored Piles (6 piles)	108	02-Nov-11	09-Mar-12	Pier D06 Bored Piles (6 piles)																

- █ Remaining Level of Effort
- █ Actual Level of Effort
- █ Actual Work
- █ Remaining Work
- █ Critical Remaining Work
- ◆ Milestone

**Contract HY/2009/19**

**Three Month Rolling Programme (21 Aug - 20 Nov 2011)**

3MRP

3MRP - Aug 2011 to Nov 2011

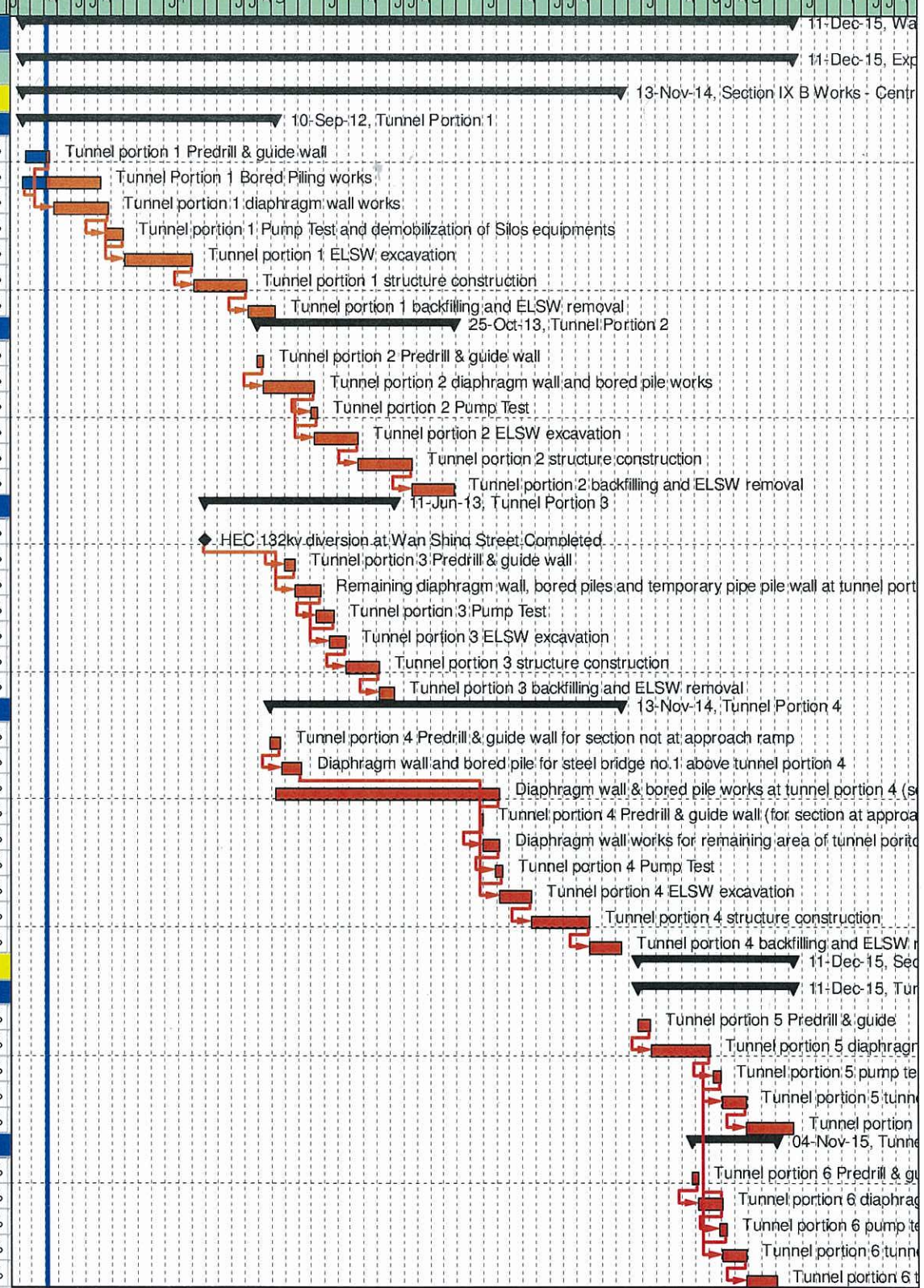
Page 4 of 4



**Wan Chai Development Phase II - Central - Wan Chai Bypass at Wan Chai East CONTRACT HK/2009/02**

**CHUN WO - CRGL JV**

Activity ID	Activity Name	OD	Start	Finish	% complete	Timeline											
						2011	2012	2013	2014	2015	2016						
<b>Wan Chai Development Phase II - Central - Wan Chai Bypass at Wan Chai East</b>																	
<b>Expanded and More Detailed Initial Works Programme</b>																	
<b>Section IX B Works - Central - Wan Chai Bypass Tunnel Structure from chainage 3400 to eastern tunnel</b>																	
<b>Tunnel Portion 1</b>																	
S9B-T1-0005	Tunnel portion 1 Predrill & guide wall	10	18-Feb-11	13-Apr-11	40%	10-Sep-12, Tunnel Portion 1											
S9B-T1-0007	Tunnel Portion 1 Bored Piling works	105	09-Feb-11	08-Aug-11	0%	11-Dec-15, Exp											
S9B-T1-0010	Tunnel portion 1 diaphragm wall works	105	25-Apr-11	27-Aug-11	0%	13-Nov-14, Section IX B Works - Centr											
S9B-T1-0015	Tunnel portion 1 Pump Test and demobilization of Silos equipments	35	20-Aug-11	30-Sep-11	0%												
S9B-T1-0020	Tunnel portion 1 ELSW excavation	130	03-Oct-11	07-Mar-12	0%												
S9B-T1-0030	Tunnel portion 1 structure construction	100	08-Mar-12	09-Jul-12	0%												
S9B-T1-0040	Tunnel portion 1 backfilling and ELSW removal	54	10-Jul-12	10-Sep-12	0%												
<b>Tunnel Portion 2</b>																	
S9B-T1-0105	Tunnel portion 2 Predrill & guide wall	10	02-Aug-12	13-Aug-12	0%	25-Oct-13, Tunnel Portion 2											
S9B-T2-0010	Tunnel portion 2 diaphragm wall and bored pile works	100	14-Aug-12	10-Dec-12	0%												
S9B-T2-0015	Tunnel portion 2 Pump Test	14	03-Dec-12	18-Dec-12	0%												
S9B-T2-0020	Tunnel portion 2 ELSW excavation	80	11-Dec-12	19-Mar-13	0%												
S9B-T2-0030	Tunnel portion 2 structure construction	100	20-Mar-13	22-Jul-13	0%												
S9B-T2-0040	Tunnel portion 2 backfilling and ELSW removal	80	23-Jul-13	25-Oct-13	0%												
<b>Tunnel Portion 3</b>																	
S9B-T3-0005	HEC 132kv diversion at Wan Shing Street Completed	0	01-Apr-12*		0%	11-Jun-13, Tunnel Portion 3											
S9B-T3-0008	Tunnel portion 3 Predrill & guide wall	20	02-Oct-12	25-Oct-12	0%												
S9B-T3-0010	Remaining diaphragm wall, bored piles and temporary pipe pile wall at tunnel portion 3	50	26-Oct-12	22-Dec-12	0%												
S9B-T3-0015	Tunnel portion 3 Pump Test	30	15-Dec-12	22-Jan-13	0%												
S9B-T3-0020	Tunnel portion 3 ELSW excavation	30	15-Jan-13	20-Feb-13	0%												
S9B-T3-0030	Tunnel portion 3 structure construction	60	21-Feb-13	06-May-13	0%												
S9B-T3-0040	Tunnel portion 3 backfilling and ELSW removal	30	07-May-13	11-Jun-13	0%												
<b>Tunnel Portion 4</b>																	
S9B-T4-0005	Tunnel portion 4 Predrill & guide wall for section not at approach ramp	21	30-Aug-12	22-Sep-12	0%	13-Nov-14, Tunnel Portion 4											
S9B-T4-0010	Diaphragm wall and bored pile for steel bridge no.1 above tunnel portion 4	40	24-Sep-12	10-Nov-12	0%												
S9B-T4-0020	Diaphragm wall & bored pile works at tunnel portion 4 (section not at approach ramp)	420	11-Sep-12	06-Feb-14	0%												
S9B-T4-0025	Tunnel portion 4 Predrill & guide wall (for section at approach ramp)	5	23-Dec-13	30-Dec-13	0%												
S9B-T4-0030	Diaphragm wall works for remaining area of tunnel portion 4 (for section at approach ramp)	30	31-Dec-13	06-Feb-14	0%												
S9B-T4-0035	Tunnel portion 4 Pump Test	14	28-Jan-14	14-Feb-14	0%												
S9B-T4-0040	Tunnel portion 4 ELSW excavation	60	07-Feb-14	19-Apr-14	0%												
S9B-T4-0050	Tunnel portion 4 structure construction	110	22-Apr-14	01-Sep-14	0%												
S9B-T4-0060	Tunnel portion 4 backfilling and ELSW removal	60	02-Sep-14	13-Nov-14	0%												
<b>Section X Works - Central - Wan Chai Bypass Tunnel Structure from western tunnel to chainage 3400</b>																	
<b>Tunnel Portion 5</b>																	
S10-T5-0005	Tunnel portion 5 Predrill & guide	21	23-Dec-14	19-Jan-15	0%	11-Dec-15, Sec											
S10-T5-0010	Tunnel portion 5 diaphragm wall & bored pile works	110	20-Jan-15	04-Jun-15	0%	11-Dec-15, Tun											
S10-T5-0015	Tunnel portion 5 pump test	14	13-Jun-15	30-Jun-15	0%												
S10-T5-0020	Tunnel portion 5 tunnel ELSW excavation	45	04-Jul-15	25-Aug-15	0%												
S10-T5-0030	Tunnel portion 5 tunnel structure construction	90	26-Aug-15	11-Dec-15	0%												
<b>Tunnel Portion 6</b>																	
S10-T6-0040	Tunnel portion 6 Predrill & guide	12	24-Apr-15	08-May-15	0%	04-Nov-15, Tunne											
S10-T6-0050	Tunnel portion 6 diaphragm wall & bored pile works at Area 10	45	09-May-15	03-Jul-15	0%												
S10-T6-0055	Tunnel portion 6 pump test	14	25-Jun-15	11-Jul-15	0%												
S10-T6-0060	Tunnel portion 6 tunnel ELSW excavation at Area 10	45	04-Jul-15	25-Aug-15	0%												
S10-T6-0070	Tunnel portion 6 tunnel structure construction at Area 10	58	26-Aug-15	04-Nov-15	0%												



<p>俊和 - 中國中鐵聯營 CHUN WO - CRGL JOINT VENTURE</p>	<p>Remaining Level of Effort</p> <p>Actual Level of Effort</p> <p>Actual Work</p> <p>Remaining Work</p> <p>Critical Remaining Work</p>	<p>Milestone</p> <p>Summary</p>	<p>CEDD CONTRACT NO. HK/2009/02</p> <p><b>Wan Chai Development Phase II - Central Wan Chai Bypass at Wan Chai East (Contract 2)</b></p> <p>Revised Programme dated 7 April 2011</p>				Date	Revision	Checked	Approved
			07-Apr-11		KT	KY				